



ANT-D5G-23

20dBi 室外指向型天線

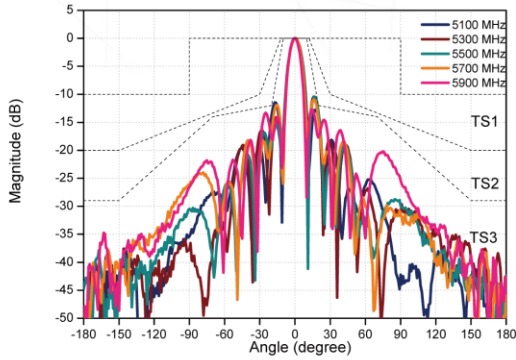


天線規格	
頻率範圍	5150 - 6100 MHz
天線增益值	20dBi
極化角度	Dual linear, $\pm 45^\circ$
水平角度	10°
垂直角度	10°
前後比	-30 dB (max.)
輸入阻抗	50 Ohm
連接線	N/A
連接頭	N Jack x 2
功率	6 W (cw)
最大風速承受	216 km/hr
溫度	-40°C to +80°C
重量	1.245 kg(exclusive of mounting kit)
體積	320 x 320 x 43 mm(include N jack)
防水防護等級	IP67
安裝支架配件組	Pole & Wall mount
Lightning protection	DC ground

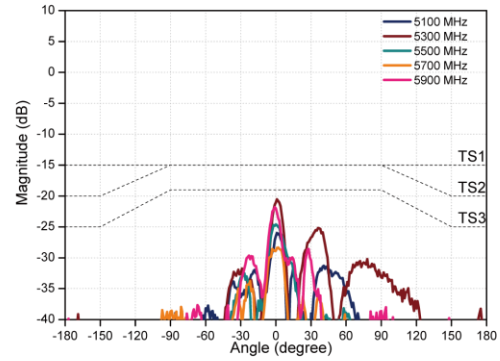
Radiation Pattern

Port-1

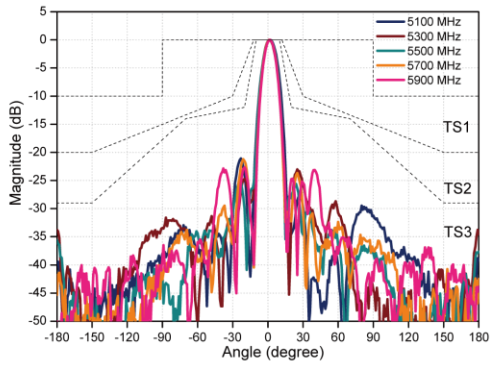
H-plane Co-polarization Pattern



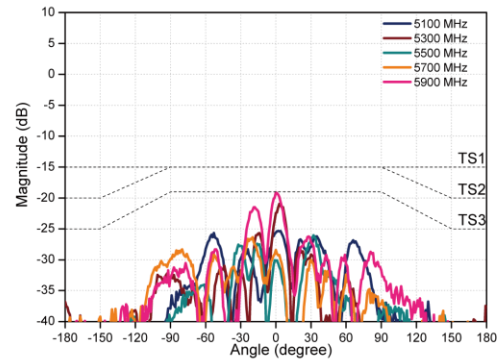
H-plane Cross-polarization Pattern



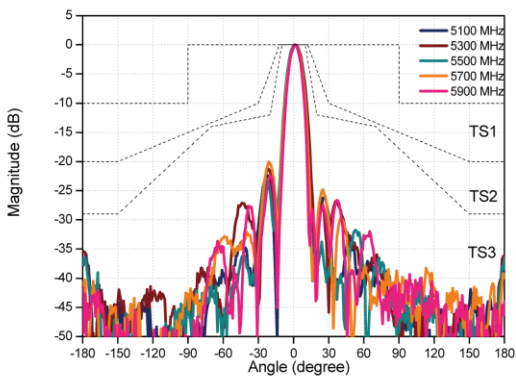
V-plane Co-polarization Pattern



H-plane Cross-polarization Pattern

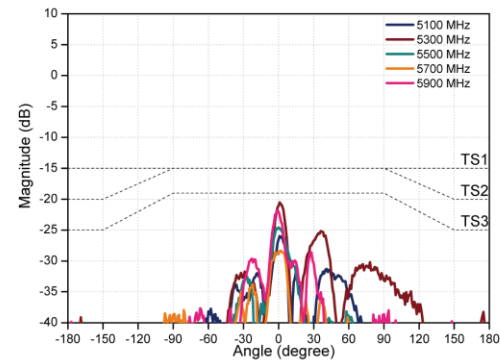


H-plane Co-polarization Pattern

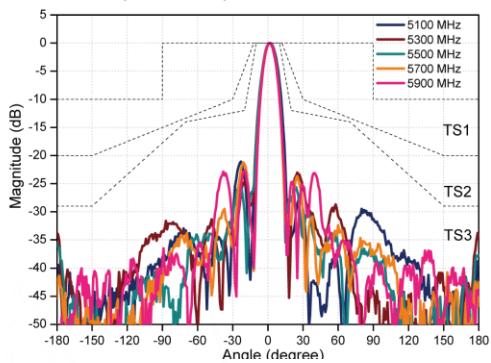


Port-2(white)

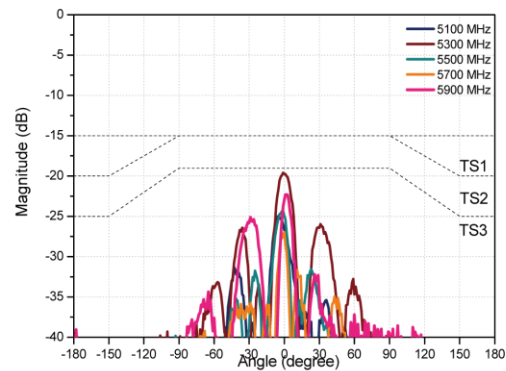
H-plane Cross-polarization Pattern



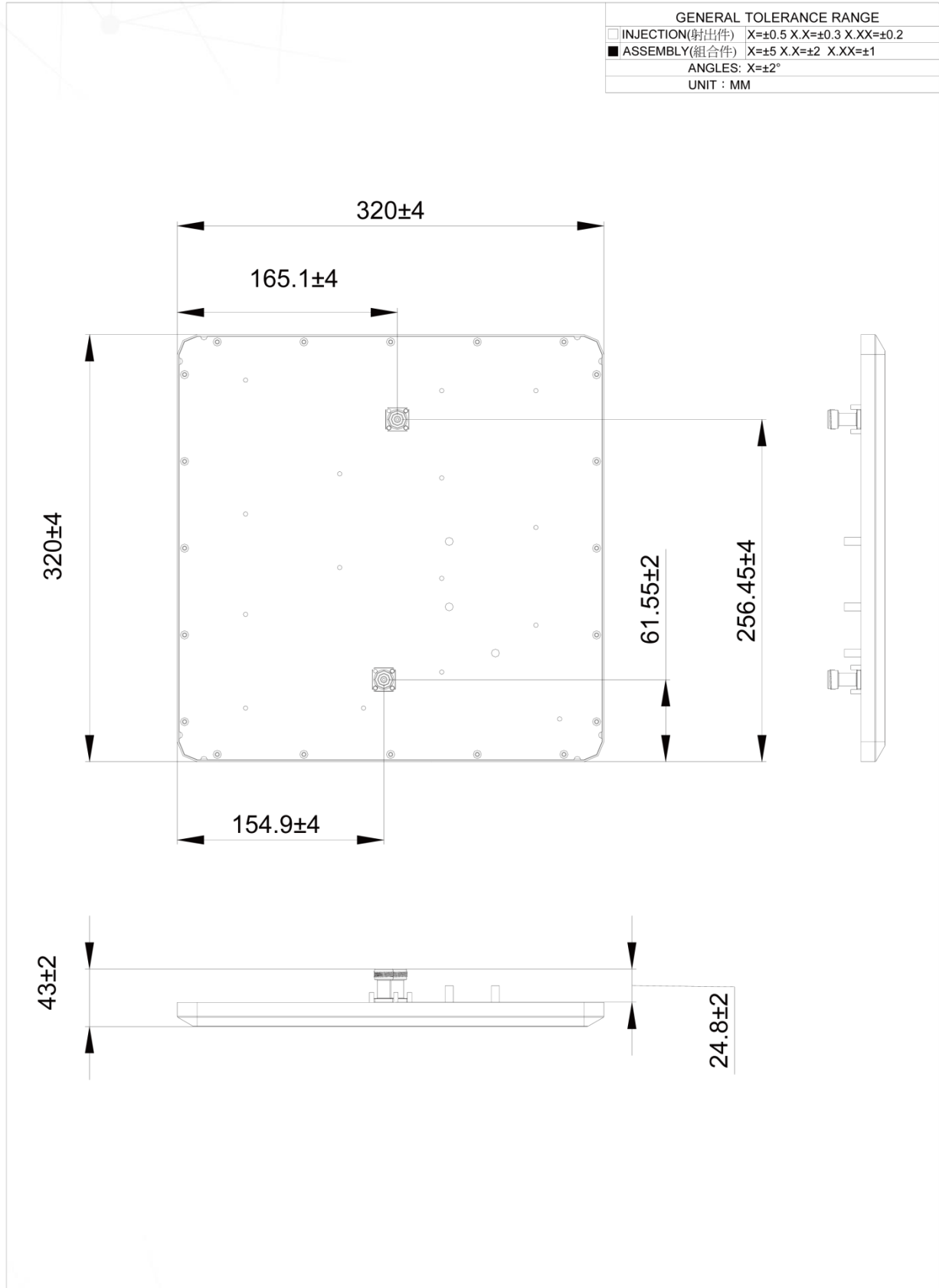
V-plane Co-polarization Pattern



V-plane Cross-polarization Pattern



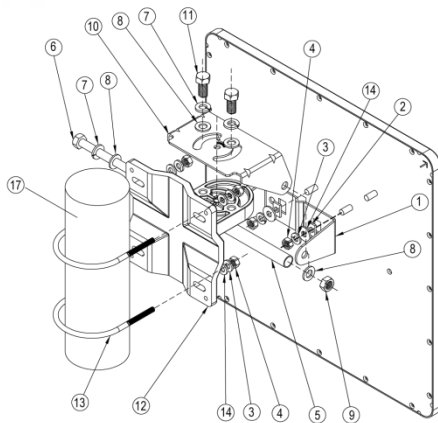
Product Drawing



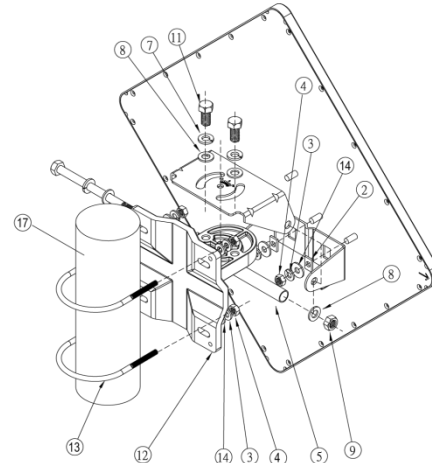
Mounting Configuration

Pole Mount

Slant±45 Degree Polarization

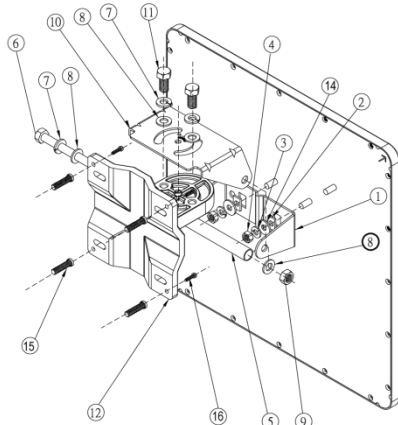


Hor. & Ver. Polarization

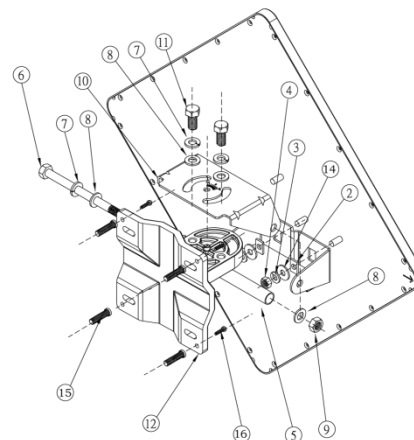


Wall Mount

Slant±45 Degree Polarization



Hor. & Ver. Polarization



1. M-Type breaket (L)	1Pcs
2. Space Keeper	2Pcs
3. Spaing washer	6Pcs
4. M6-1.0 Nut	6Pcs
5. Steel tube 93.2 mm	1Pcs
6. XHM8-1.25*120	1Pcs
7. M8 spring washer	3Pcs
8. M8 washer	4Pcs
9. M8 Nut	1Pcs

10. Rotating bracket	1Pcs
11. XHM8-1.25*20	2Pcs
12. Mounting main fram	1Pcs
13. U-Type Screw	2Pcs
14. M6 washer	6Pcs
15. Wall Tiger	4Pcs
16. TH 5/32-16*1"	4Pcs
17. Pole (φ2-3inch)	

Note(備註):

1. Mounting recommended torque(支架建議鎖緊扭力):60 Kgf.cm(5.88 N.m)
2. Mounting Max. torque(支架最大鎖緊扭力):80 kgf.cm(7.84 N.m)