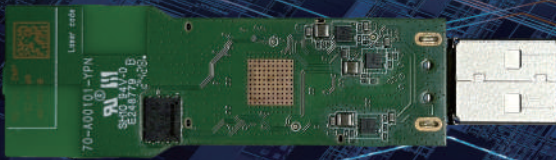


Wi-Fi 7 New Evolution



BE750-A USB Wireless Module

Coverage



- Supports Wi-Fi 7 standard (802.11be)
- Compatible with 802.11ax/ac Technologies
- 2.4GHz / 5GHz / 6GHz Concurrent
- High-Performance with Tri-Band
- USB 3.0 Type A Interface
- High Wireless Performance



- Supports Wi-Fi 7 standard (802.11be)
- 2.4GHz / 5GHz / 6GHz Concurrent
- 2x2 MIMO per band, total 6 spatial streams
- Built-in Omni-directional antennas
- Fixed to Solar Module
- Outdoor pole mount for optimal coverage

AG710 Outdoor AP

Coverage

New Energy Fields & Communication Management Solution

Z-COM SP250-A04與zMEC 搭配，為台電DNP3.0合格廠商

It works in conjunction with zMEC for DNP3.0 protocol

✓ 符合工業物聯網VPC安規標準(EMC安規+資安安規)

SP250-A04 is compliant with AIOT VPC safety standards, encompassing both EMC and cybersecurity criteria.

✓ 便利性：使用4G LTE上網，因大多地處偏遠，免除申請DSL/Fiber網路的困擾

Convenience : Revolutionize connectivity with 4G LTE, bypassing the hassles of DSL/Fiber network applications. Ideal for remote areas, our product ensures a smooth and hassle-free internet experience.

✓ 安全性：VPN 通訊協定，確保資料絕佳安全性

Security : Prioritize data security with built-in VPN protocol for optimal protection against potential threats.

✓ 可靠性：斷線時持續記錄，並於重新連線後自動上傳資料

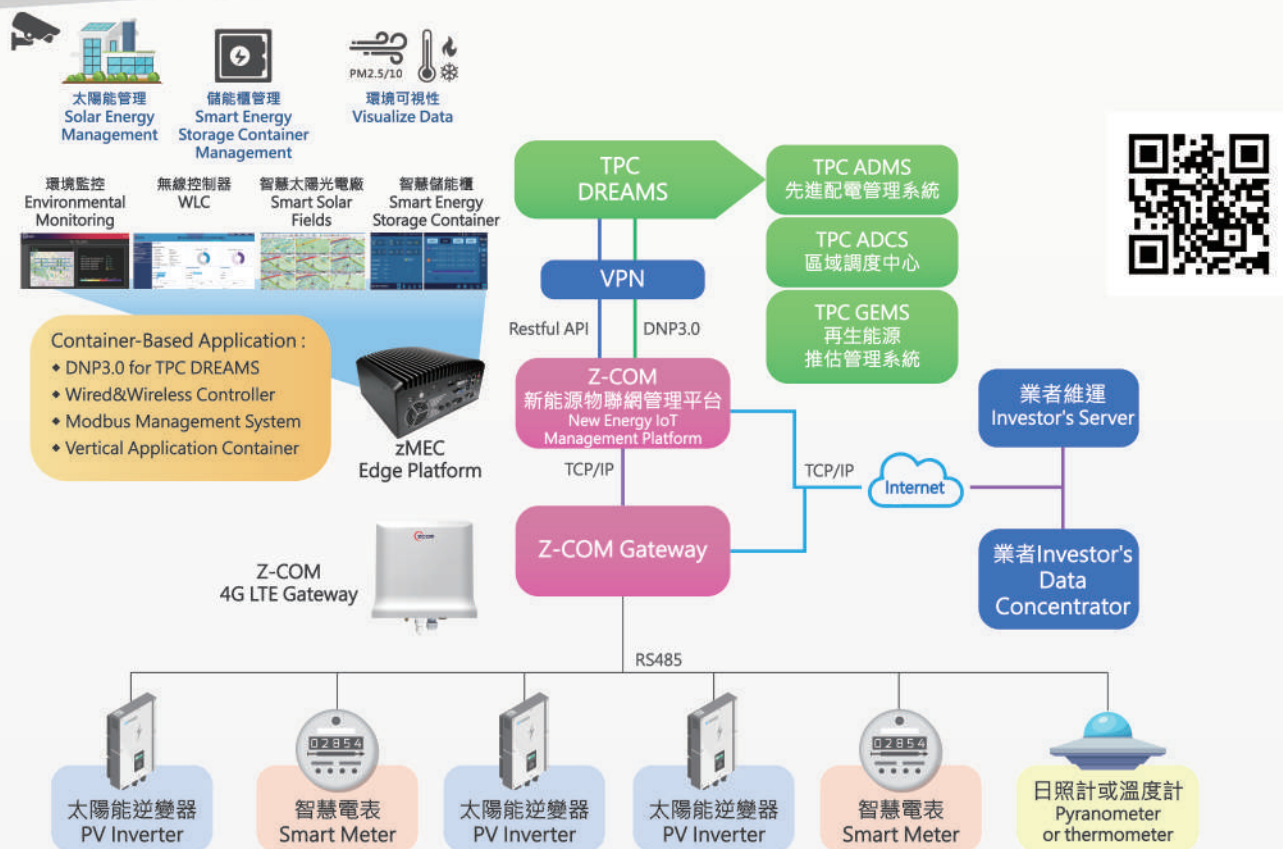
Reliability : Uninterrupted data recording during disconnections, with automatic upload upon reconnection for reliable performance.

✓ 客製化：智捷科技自研產品可彈性提供API客製化需求

Customization : Tailor your smart city experience with our open API platform. Empower developers to create customized solutions, fostering innovation and adaptability within your unique urban ecosystem.

✓ 堅固耐用結構設計：IP67防塵防水等級、耐寬溫，14級防風標準、UL746C紫外線保護

Rugged and Durable Design : IP67 dustproof and waterproof rating, wide operating temperature range, 14-level windproof capability, and UV protection (UL746C) ensure durability in urban environments.



Wireless Surveillance Solution



高品質影像監控 High Resolution Surveillance

為高解析度影像提供足夠頻寬做穩定傳輸
Provide bandwidth essential for high resolution image for stable transmission

透過邊緣運算減低延遲以提升傳輸效率
Reduce latency through edge computing to improve transmission efficiency

高速穩定的無線網路 High-speed and Reliable Wi-Fi Network

內建高增益天線可增大傳輸距離與範圍
Built-in high gain antenna extend the transmission distance and coverage

5GHz優先降低雜訊干擾
Utilize 5GHz frequency band as a priority to minimize interference

低建置與維護成本 Low Costs for Deployment and Maintenance

集中管理平台，進行無線存取點大規模批次設定
Centralized management for bulk AP configuration to enhance the efficiency of network deployment

搭載PoE out供電，簡化安裝程序
PoE-powered to reduce cabling



智慧交通 Smart transportation



智慧工地 Smart Construction Site Management



智慧社區 Smart Community



智能物件偵測
AI Object Detection



入侵檢測
Intrusion Detection



可彈性移機至下一工地
Moving flexibly to next site



違規停留檢測
Illegal parking detection



車牌辨識
Automatic number-plate recognition



彈出式實時查看AI事件
Real-time pop-ups



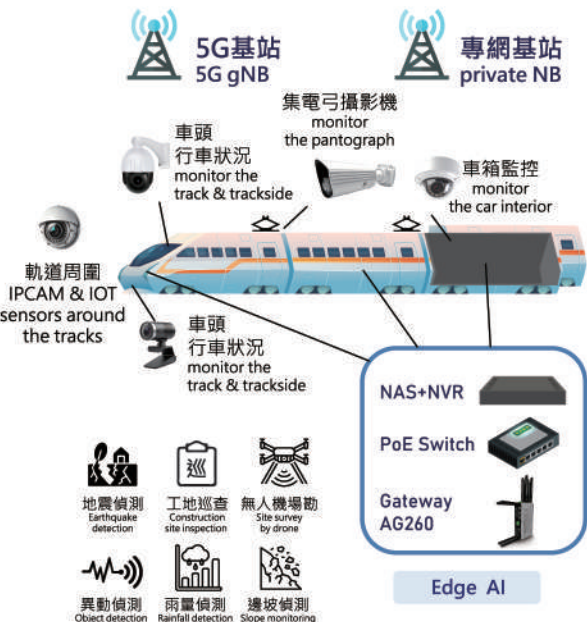
可擴充監視系統
Scalable Surveillance system



事件警報
Event warning

集電弓系統中繼站

Relay for pantograph monitoring system



WLC Deploy a manageable, Intelligent, Easy Network



Cutting-Edge Technologies



無縫漫遊
Seamless roaming



自動頻道
Auto channel



頻寬控制
Bandwidth control



5GHz 優先
Auto channel
(5GHz prioritization)



負載平衡
Load balance



自動功率調整
Auto power

Key Features



SDN架構



集中管理
Centralized



即時監控
Real-time monitoring



遠程故障排除
Remote Troubleshooting



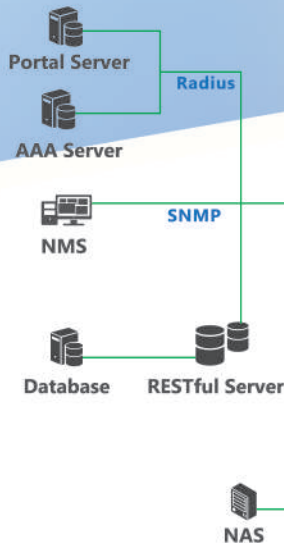
N+1 Backup



異質網路整合
Heterogeneous Network Integration

zMEC Edge Computing Platform

Core



Edge

WLC ZOAM 3rd-party APPs... GEN-AI Firewall

NFV / Docker Container

SDN / OVS OpenFlow

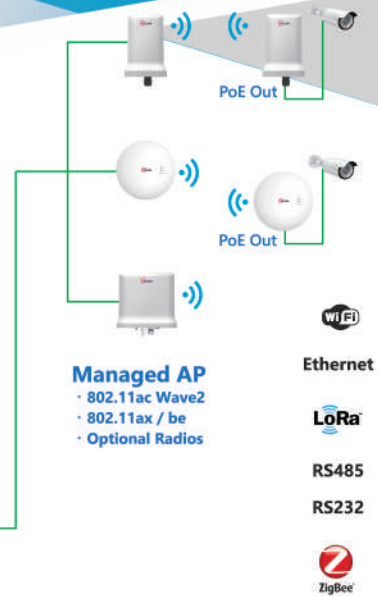
Linux OS

IPC



Kubernetes(K8S)

Access



Network Slicing

高擴充性
Scalability

URLLC

降低佈建成本
Low deployment cost

Superior Scalability

高可用性/高彈性
High Flexibility

Load Balance

自動調配資源
Resource Allocation

資料安全性
Security



快速反應時間
Low-latency connectivity



智慧軌道方案



5G專網 應用

專為智慧交通設計的5G專網
提供低延遲和高頻寬的數據傳輸



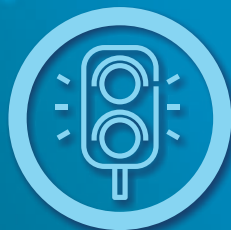
AI影像 偵測技術

使用AI模型進行路口異物偵測
具高達95%的識別精確率



集電弓磨耗 &火花檢測

透過IP CAM實時監測集電弓狀態
並利用Edge AI進行異常識別



交通號誌 資訊整合

整合列車定位和車速資訊
提供司機建議車速以提高通行效率



路側安全 偵測系統

在平面道路路口安裝監控設備
實時監測路口異物狀態



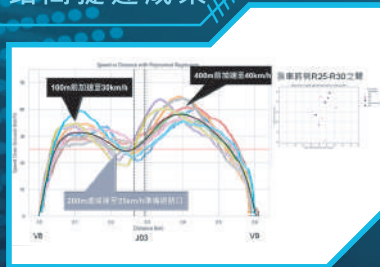
提速指引

行控中心和列車端的可視化界面
即時資訊和警示
提升管理效率和行車安全

可視化介面



站間提速成果



GPS即時定位



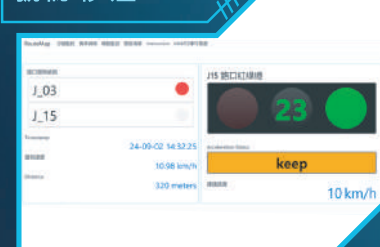
集電弓&線溫& 路口異物偵測



物聯網資安 零信任



提速指引 號誌秒差



Wi-Fi 6 / 6E Product

Coverage



SP250 Outdoor AP

2.4GHz / 5GHz Concurrent
Omni-directional antennas
for coverage

PTP/Coverage



SP250-S5 Outdoor AP

2.4GHz / 5GHz Concurrent
2.4GHz for coverage
5GHz directional antennas
for PTP Long Distance

4G LTE



SP250-A04 Backhaul AP/ Gateway

2.4GHz / 5GHz Concurrent

PtP/PtMP



SP230-S5 Outdoor AP

2.4GHz / 5GHz Concurrent
2.4GHz Omni antennas 5GHz
Directional antennas
6km 100Mbps

5G NR



AG260 Railway Gateway

2.4GHz / 5GHz Concurrent
EN 50121 Railway applications
Electromagnetic compatibility
EN 50155
M12 X-Coded

Coverage



AS240 Entry-level Indoor AP

2.4GHz / 5GHz Concurrent
Omni-directional antennas for
coverage



成立於1995年，智捷科技專注於無線通訊研發與製造。憑藉近30年技術實力，成功推動大規模Wi-Fi Offload和智慧城市項目，全球部署數百萬運營商級Wi-Fi基地台，連接超過五億使用者。近年來更多次與中國、印度電信商合作佈建智慧城市，積極與IoT世代網路應用接軌。作為無線網路和混合組網的專業網路系統供應商，智捷科技整合5G、Wi-Fi/AIoT技術，積極佈局專用網路系統和邊緣運算的AIoT應用，打造新一代的移動寬頻應用。

Since 1995, Z-COM pioneers wireless communication R&D, boasting nearly 30 years of expertise. We've successfully led global Wi-Fi Offload and smart city projects, connecting 500+ million users with millions of carrier-grade Wi-Fi stations. Collaborating with telecom giants in China and India, we actively embrace IoT-era network applications. As a top-tier provider in wireless and hybrid networking, Z-COM integrates 5G, Wi-Fi, and AIoT technologies. Our strategic deployment includes dedicated networks and edge computing for AIoT, shaping the next-gen mobile broadband solutions.



+886-3-5777364



www.zcom.com.tw



z-com@zcom.com.tw
sales@zcom.com.tw



新竹市東區新竹科學園區新安路8號5樓

5F, No. 8, Hsin-Ann Road, Hsinchu Science Park, Hsinchu, Taiwan

Copyright © 2024 Z-COM Inc. All rights reserved.

